



# Customs Control Equipment Instrument

Information Session for equipment manufacturers  
and service providers

*European Commission, DG TAXUD*

*17/11/2021*

# Agenda

- *Presentation of the Customs Control Equipment Instrument (CCEI)*
- *List of equipment eligible for funding under the CCEI*
- *Most relevant equipment features*
- *Q & A*

# The Customs Control Equipment Instrument



# CCEI within the Multiannual Financial Framework

## MFF 2021-2027 Headings 1 and 4

SINGLE MARKET

MIGRATION AND  
BORDER MANAGEMENT

OTHERS

Single Market Programme

EU Anti-  
Fraud  
Programme

Fiscalis  
Programme

Customs  
Programme

Asylum &  
Migration  
Fund

Integrated Border  
Management Fund

...

COSME,  
Food, Health,  
Competition...

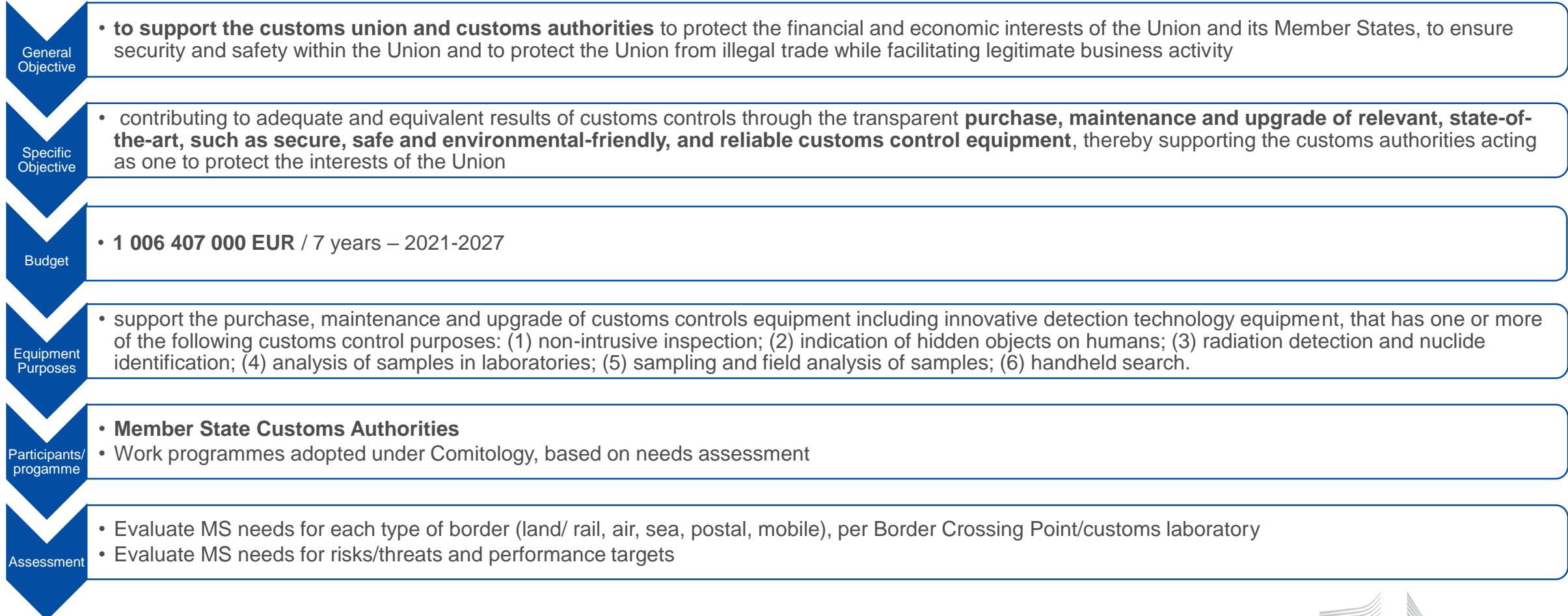
TAXUD  
prerogative  
lines (studies)

Border  
Management  
and Visa  
(people)

Customs  
Control  
Equipment  
(goods)

# CCEI in a nutshell

With a view to the long-term aim of harmonised application of customs controls by the Member States

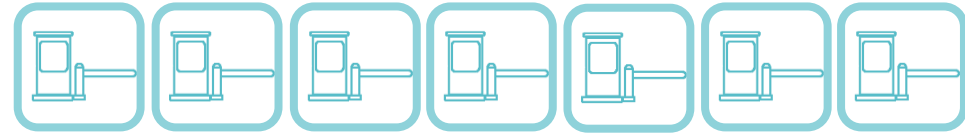




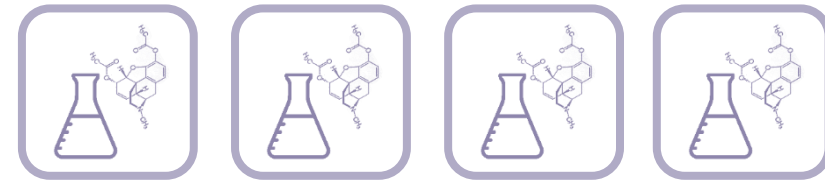


# EU BCPs and Customs laboratories

- Border Crossing Points: + 2000



- Customs laboratories: 78



# CCEI Vision

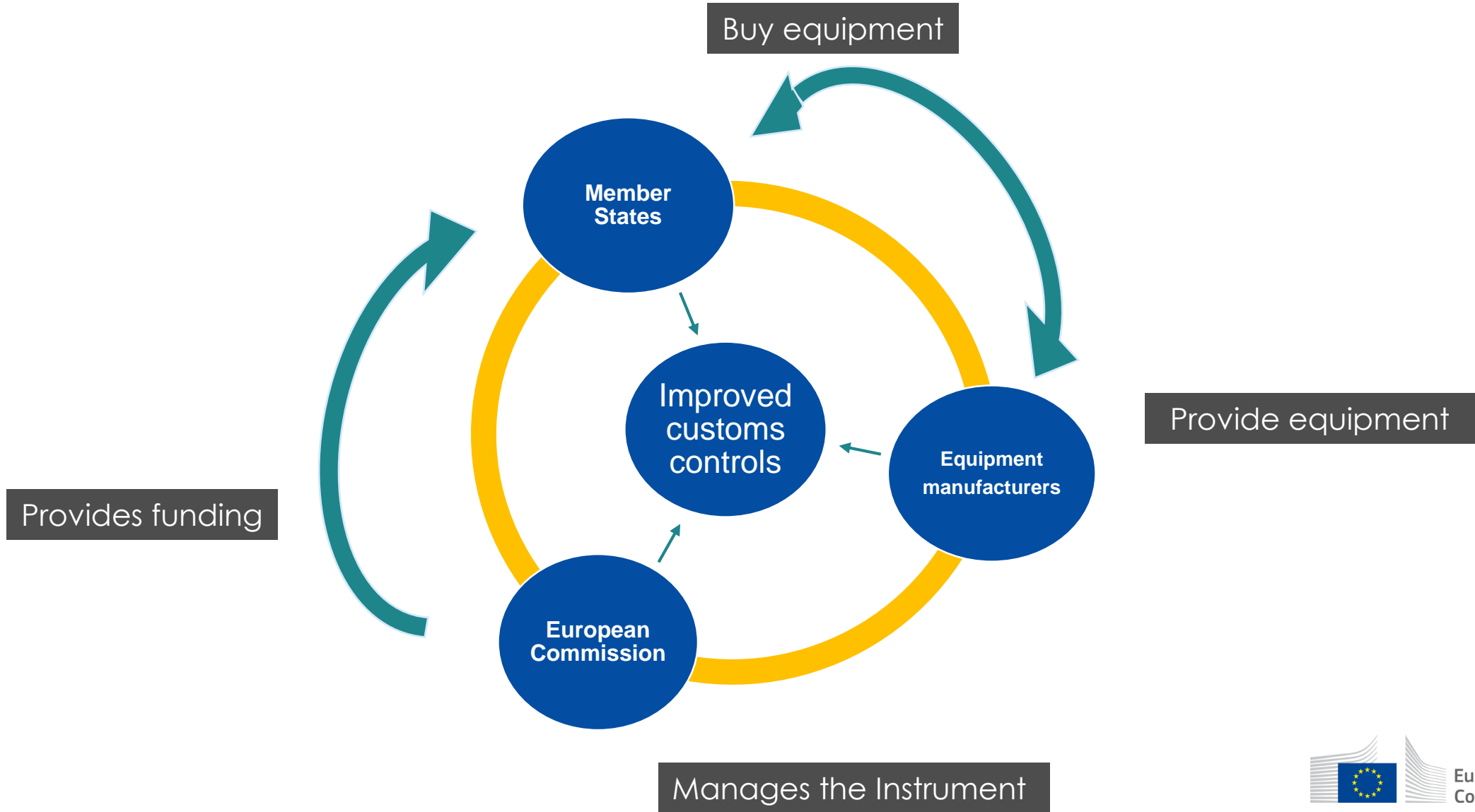
## 1. Short-term: **adequacy** – 1st WP

- **Fill in gaps:** critical needs, urgencies, unmet controls requirements
- **Added value:** Customs controls performance
- Definition of EU standards\*
- Improve **knowledge and information**

## 2. Medium-long term: **equivalence** – 2<sup>nd</sup> and 3<sup>rd</sup> WP

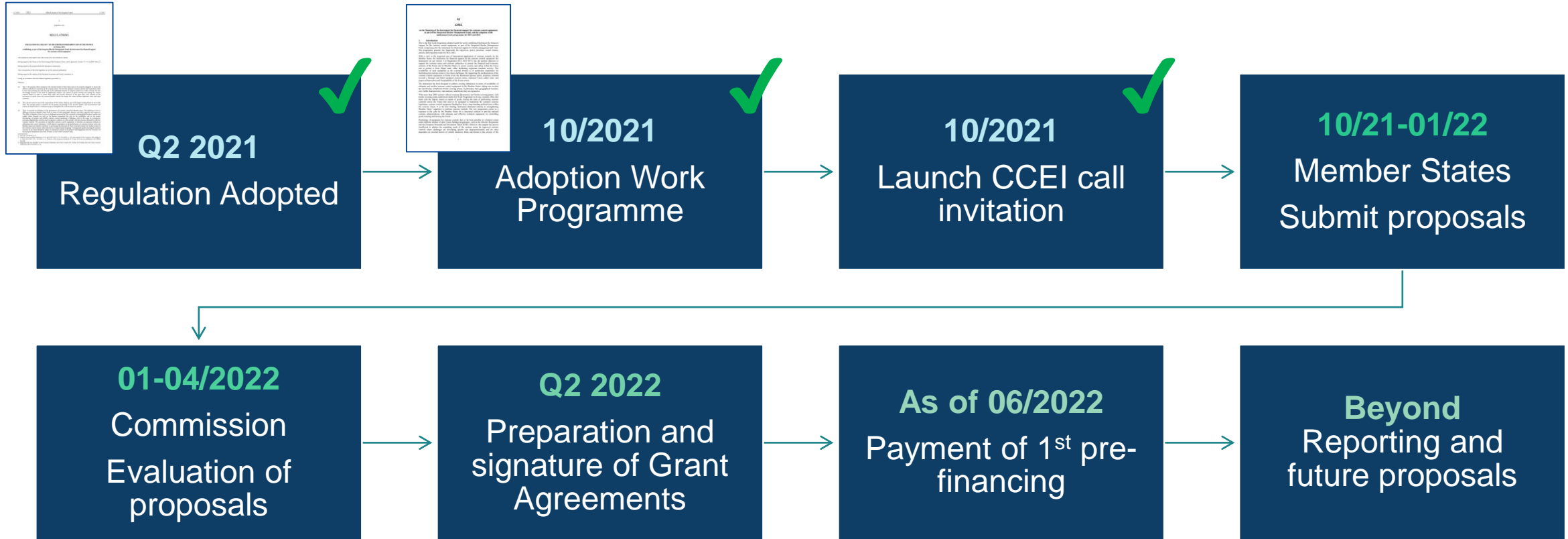
- Implementation of **EU equipment standards**
- Take stock and use **knowledge and information gathered**
- **Co-sharing** of equipment
- **Innovation**

# CCEI Key players





# Implementation plan



# CCEI Work programme 2021-2022

## Financial envelope

Total budget 2021-2027  
~ EUR1 billion

**271 514 000** Euros for first two years 2021-2022

**80%** for **Border Crossing Points**

**20%** for **Customs laboratories**

**Co-financing:** 80% Commission + 20 % Member States

Maximum **15%** of budget per each category per **Member State**

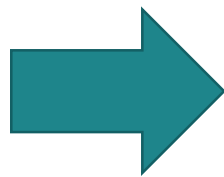
The **duration of the project** presented in every work package shall **not exceed 36 months**

# CCEI policy priorities

## Policy priorities

- 1) Stronger and better equipped Customs Union
- 2) European added value
- 3) Innovation and sustainability

Award  
criteria



- ✓ **Relevance:** in relation to a clearly identified performance gap (focus on needs) (30%)
- ✓ **Added value:** in terms of expected results/improvements/synergies (focus on results) (40%)
- ✓ **Sustainability:** reliable, secure, safe and environmental-friendly (legal requirements) (20%)
- ✓ **Innovation:** equipped for new challenges (bonus for state-of-art equipment) (10%)

# List of eligible equipment under the CCEI

# Equipment control purposes

- 1. non-intrusive inspection**
- 2. indication of hidden objects on humans**
- 3. radiation detection and nuclide identification**
- 4. analysis of samples in laboratories**
- 5. sampling and field analysis of samples**
- 6. handheld search.**

# Eligible Equipment for WP 2021/2022

## BCP - Equipment type

X-ray Scanners and Backscatters (Fixed/Mobile, Low/High Energy)

Computed Tomography (CT) Scanner

Automatic Number Plate/ Container Recognition System

Body Scanner

Endoscope (device)

Mobile Radiation Detection Device

Radiation Portal Monitor

Isotope Identification Device (RIID)

Handheld radiation monitor

Personal radiation monitor/detector (PRM)

Ion mobility (IMS and ITMS) for trace detection

Sniffer dog

XRF Fluorescence device

Spectroscopy (Infrared/Raman)

## Customs Laboratory - Equipment type category

Analytical Instruments and Analysers

Chromatography

General Laboratory Equipment

Microscopy and macroscopy

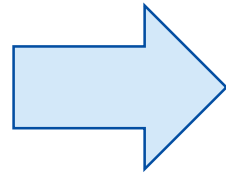
Spectrometry



# Most relevant equipment features

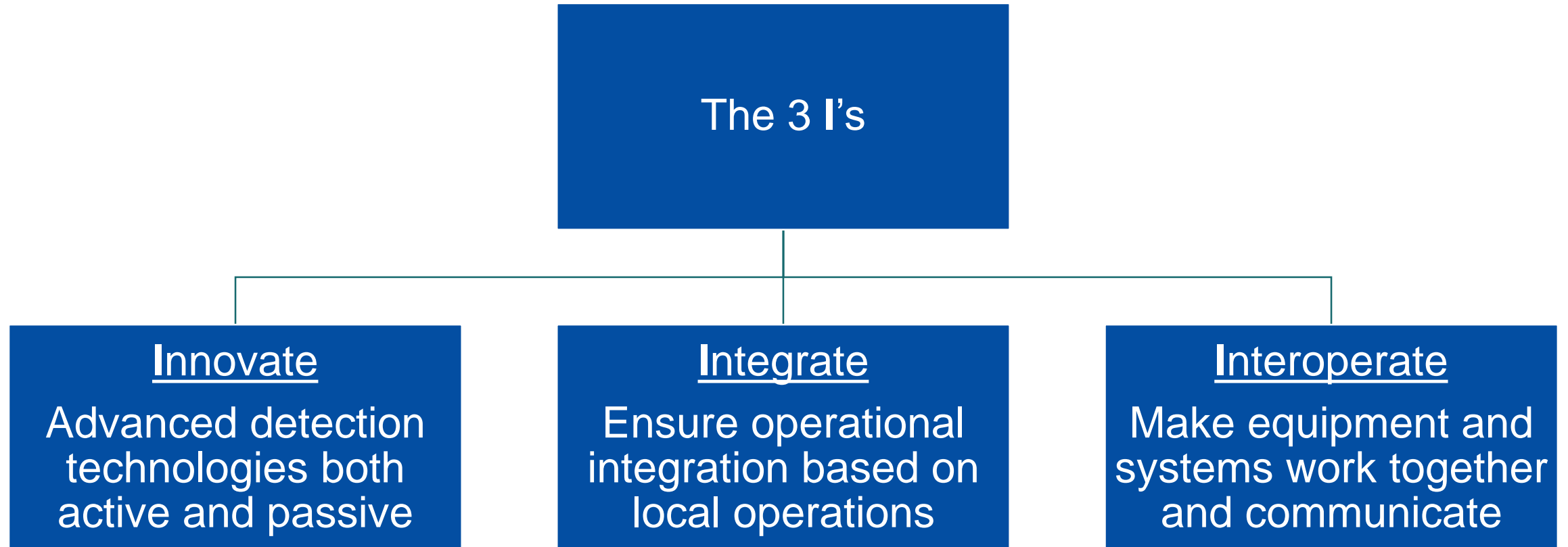
# CCEI priorities and equipment requirements

**Most relevant  
equipment  
features**



- ✓ Safety
- ✓ Security
- ✓ Cyber-resilience
- ✓ Interoperability
- ✓ Maintenance & warranties
- ✓ Environmental requirements

# The way forward in customs innovation



# Q&A

# Keep in touch



[TAXUD-CCEI-A1@ec.europa.eu](mailto:TAXUD-CCEI-A1@ec.europa.eu)



[@EU\\_Taxud](https://twitter.com/EU_Taxud)



[EU tax and customs](https://www.youtube.com/watch?v=...)

# Thank you



© European Union 2020

Unless otherwise noted the reuse of this presentation is authorised under the [CC BY 4.0](https://creativecommons.org/licenses/by/4.0/) license. For any use or reproduction of elements that are not owned by the EU, permission may need to be sought directly from the respective right holders.

Slide xx: **element concerned**, source: e.g. [Fotolia.com](https://www.fotolia.com/); Slide xx: **element concerned**, source: e.g. [iStock.com](https://www.istock.com/)

